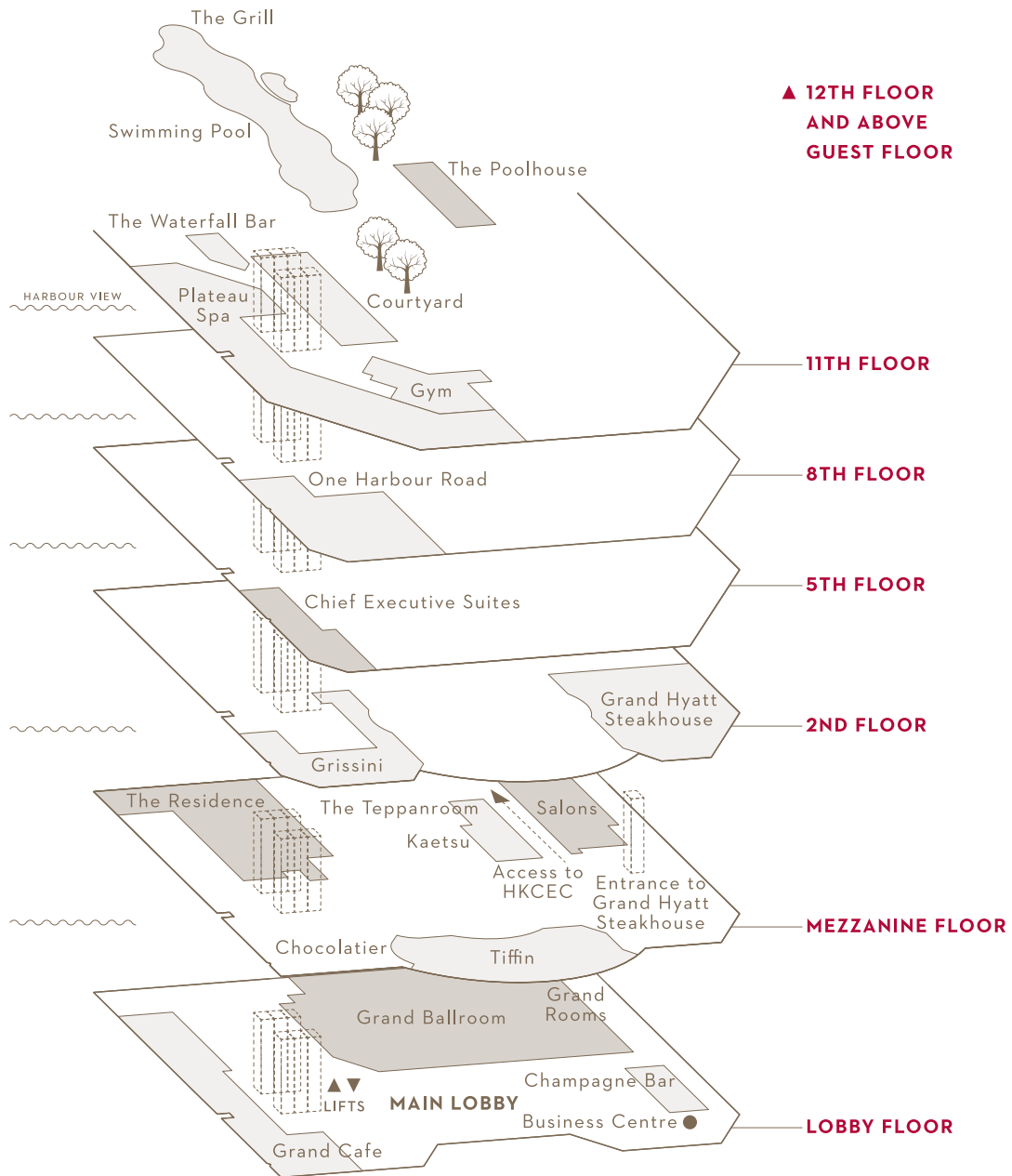


A photograph of a grand, circular restaurant interior. The ceiling is the focal point, featuring a large, multi-tiered chandelier with thousands of crystals, surrounded by concentric rings of recessed lighting and smaller crystal accents. The room is filled with round tables, each set with white tablecloths, white plates, glassware, and silverware. Each table is decorated with a centerpiece of white flowers and greenery. The walls are light-colored with arched doorways and a large projection screen on the right side. The overall atmosphere is elegant and sophisticated.

GRAND | HYATT™



11TH FLOOR

- Plateau Spa
- The Grill
- The Waterfall Bar
- The Poolhouse
- Swimming Pool
- Fitness Studios
- Tennis Courts

8TH FLOOR

- One Harbour Road
- Chinese Restaurant

5TH FLOOR

- Chief Executive Suites

2ND FLOOR

- Grissini Italian Restaurant

MEZZANINE FLOOR

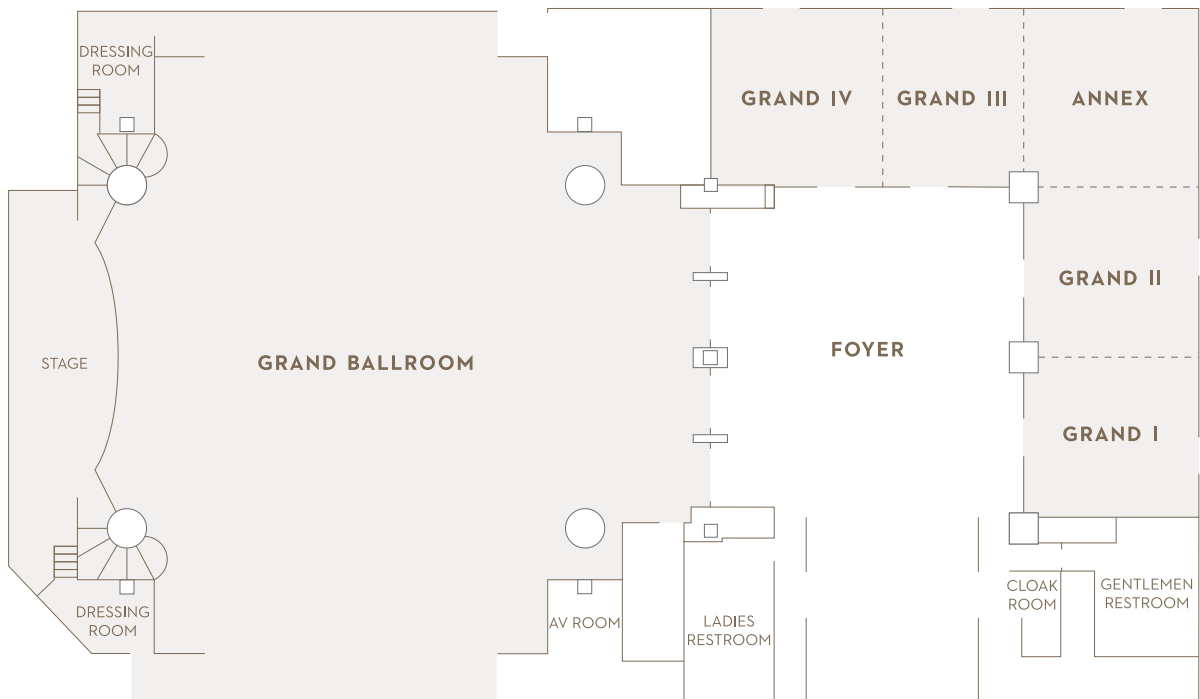
- Kaetsu Japanese Restaurant
- Grand Hyatt Steakhouse
- Tiffin
- Chocolatier
- Salons
- The Residence
- Drawing Room
- Lounge
- Library
- BruneBlonde

LOBBY FLOOR

- Main Lobby
- Grand Cafe
- Champagne Bar
- Grand Ballroom
- Grand Rooms
- Business Centre
- Blooms n' Blossom



LOBBY LEVEL - GRAND BALLROOM, FOYER, GRAND I, II, III, IV & ANNEX

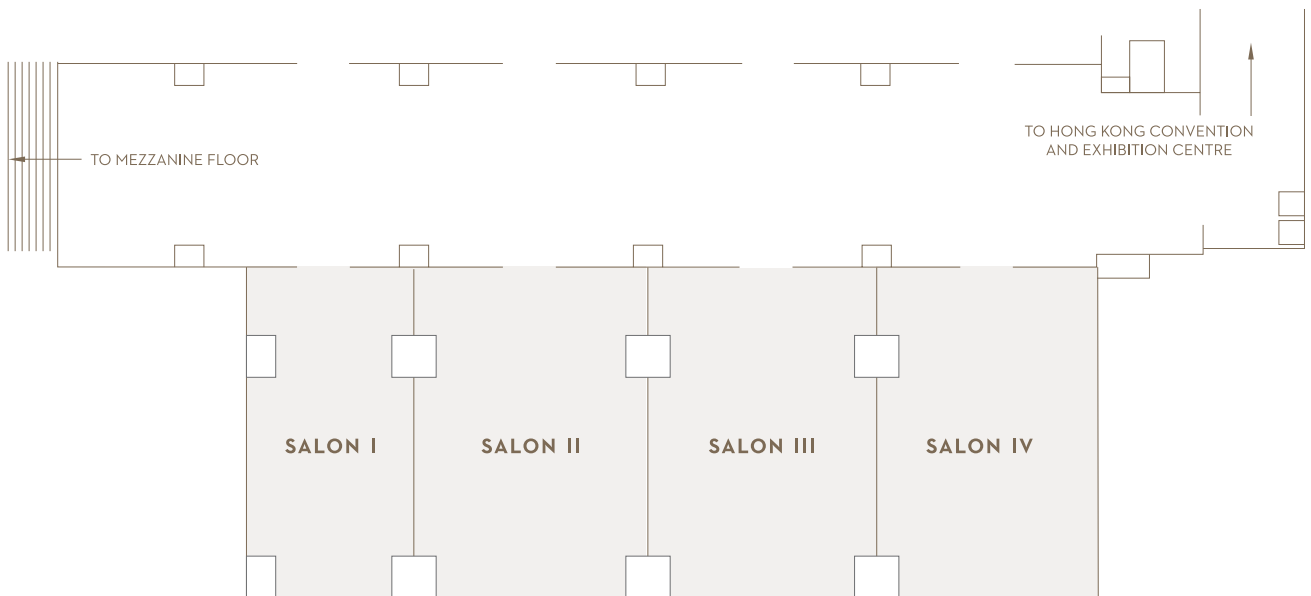


CAPACITY CHART

	HEIGHT M. / FT.	AREA SQ. M. / SQ. FT.	THEATRE	CLASSROOM	COCKTAIL	PRIVATE DINING	BOARDROOM	U-SHAPE
GRAND BALLROOM, FOYER, GRAND I, II, III, IV & ANNEX	2.9-6.3 / 9.5-20.7	1186 / 12766	-	-	1600	888	-	-
GRAND BALLROOM	6.3 / 20.7	730 / 7858	950	420	1200	600	-	90
GRAND I	2.9 / 9.5	51 / 549	38	18	30	24	14	17
GRAND II	2.9 / 9.5	55 / 592	35	18	35	24	20	21
GRAND III	2.9 / 9.5	43 / 463	31	18	33	24	14	15
GRAND IV	2.9 / 9.5	53 / 570	40	18	35	24	20	21
GRAND I, II & ANNEX	2.9 / 9.5	153 / 1647	125	96	120	108	60	65
GRAND III, IV & ANNEX	2.9 / 9.5	143 / 1539	125	96	120	108	60	65
GRAND I, II, III, IV & ANNEX	2.9 / 9.5	249 / 2680	250	190	185	168	-	-
ANNEX	2.9 / 9.5	47 / 506	-	-	-	-	-	-
FOYER	3 / 9.8	207 / 2228	-	-	-	-	-	-



MEZZANINE FLOOR - SALON I, II, III, IV

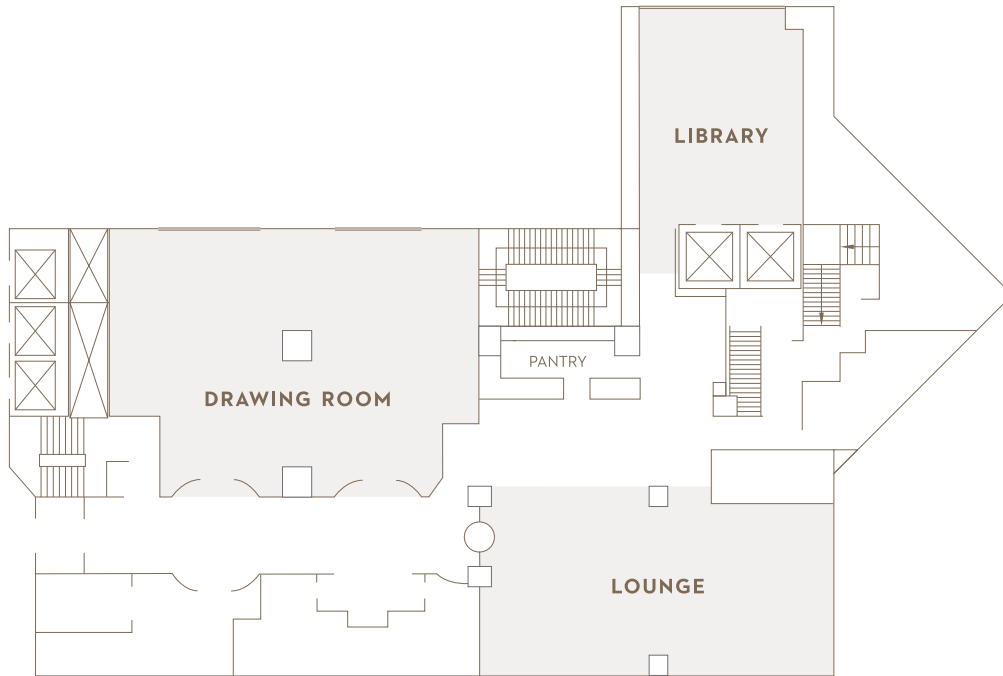


CAPACITY CHART

	HEIGHT M. / FT.	AREA SQ. M. / SQ. FT.	THEATRE	CLASSROOM	COCKTAIL	PRIVATE DINING	BOARDROOM	U-SHAPE
SALON I	2.3 / 7.6	62 / 663	43	21	30	24	26	21
SALON II	2.3 / 7.6	81 / 870	63	27	50	36	26	28
SALON III	2.3 / 7.6	81 / 870	63	27	50	36	26	28
SALON IV	2.3 / 7.6	77 / 829	63	27	50	36	26	28
SALON I & II	2.3 / 7.6	143 / 1533	90	42	90	72	32	32
SALON II & III	2.3 / 7.6	162 / 1740	117	54	120	84	42	40
SALON I, II & III	2.3 / 7.6	224 / 2403	148	63	160	156	54	52
SALON III & IV	2.3 / 7.6	158 / 1699	108	48	120	84	42	40
SALON II, III & IV	2.3 / 7.6	239 / 2569	168	84	180	168	66	64
SALON I, II, III & IV	2.3 / 7.6	301 / 3232	200	108	220	216	78	76



MEZZANINE FLOOR - THE RESIDENCE

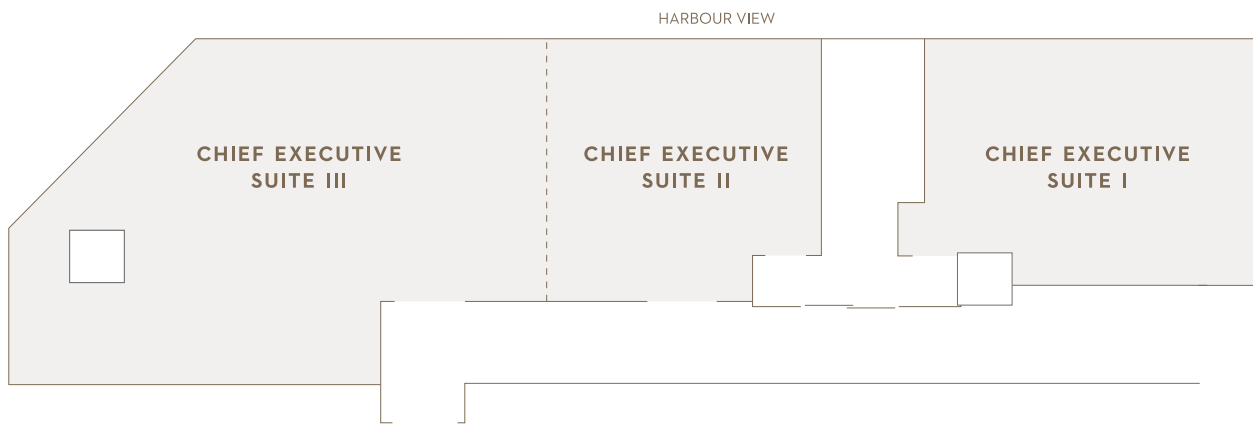


CAPACITY CHART

	HEIGHT M. / FT.	AREA SQ. M. / SQ. FT.	THEATRE	CLASSROOM	COCKTAIL	PRIVATE DINING	BOARDROOM	U-SHAPE
THE RESIDENCE								
DRAWING ROOM	2.5 / 8.1	185 / 1995	81	42	100	60	26	22
LOUNGE	2.6 / 8.4	147 / 1585	80	57	100	60	30	34
LIBRARY	2.7 / 8.8	91 / 980	48	21	50	20	16	16



LEVEL 5 - CHIEF EXECUTIVE SUITE

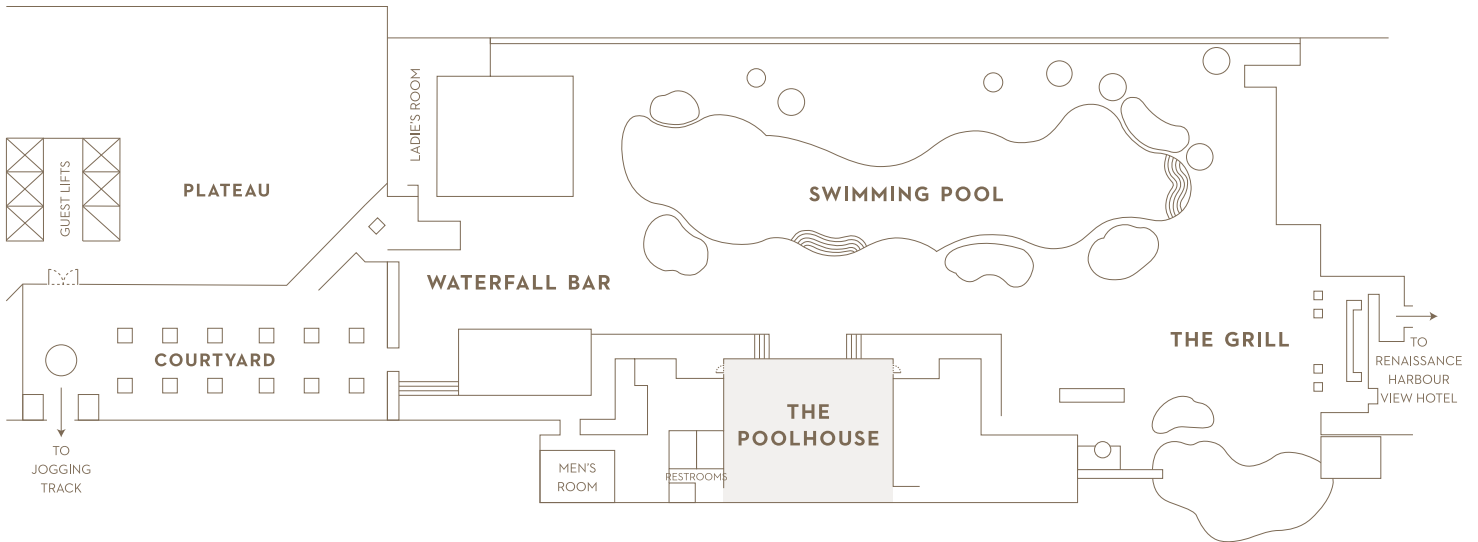


CAPACITY CHART

	HEIGHT M. / FT.	AREA SQ. M. / SQ. FT.	THEATRE	CLASSROOM	COCKTAIL	PRIVATE DINING	BOARDROOM	U-SHAPE
CHIEF EXECUTIVE SUITE I	3 / 9.8	42 / 452	30	18	36	16	20	15
CHIEF EXECUTIVE SUITE II	2.9 / 9.5	33 / 355	23	12	32	16	12	10
CHIEF EXECUTIVE SUITE III	2.9 / 9.5	74 / 796	52	30	60	36	22	21
CHIEF EXECUTIVE SUITE II & III	2.9 / 9.5	107 / 1151	95	51	100	72	40	33



LEVEL 11 - THE POOLHOUSE



CAPACITY CHART

	HEIGHT M. / FT.	AREA SQ. M. / SQ. FT.	THEATRE	CLASSROOM	COCKTAIL	PRIVATE DINING	BOARDROOM	U-SHAPE
THE POOLHOUSE	4.8 / 14.5	156 / 1682	120	72	120	96	40	59
WATERFALL BAR	-	-	-	-	80	-	-	-
THE GRILL	-	-	-	-	200	120	-	-

ENQUIRIES

Phone +852 2584 7878 (Groups enquiries)

+852 2584 7068 (Events only)

Fax +852 2802 0731

Email hongkong.grand@hyatt.com



GRAND HYATT HONG KONG

1 Harbour Road, Hong Kong

Phone +852 2588 1234

Fax +852 2802 0677

Email hongkong.grand@hyatt.com